

Trauma and Injury Intelligence Group Biannual Bulletin

Aintree University Hospital Emergency Department
October 2014 to September 2015

December 2015



Centre for Public Health,
Faculty of Education, Health and Community,
Liverpool John Moores University,
Henry Cotton Campus,
15-21 Webster Street,
Liverpool, L3 2ET

cph.org.uk

0151 231 4500

tiig@ljmu.ac.uk

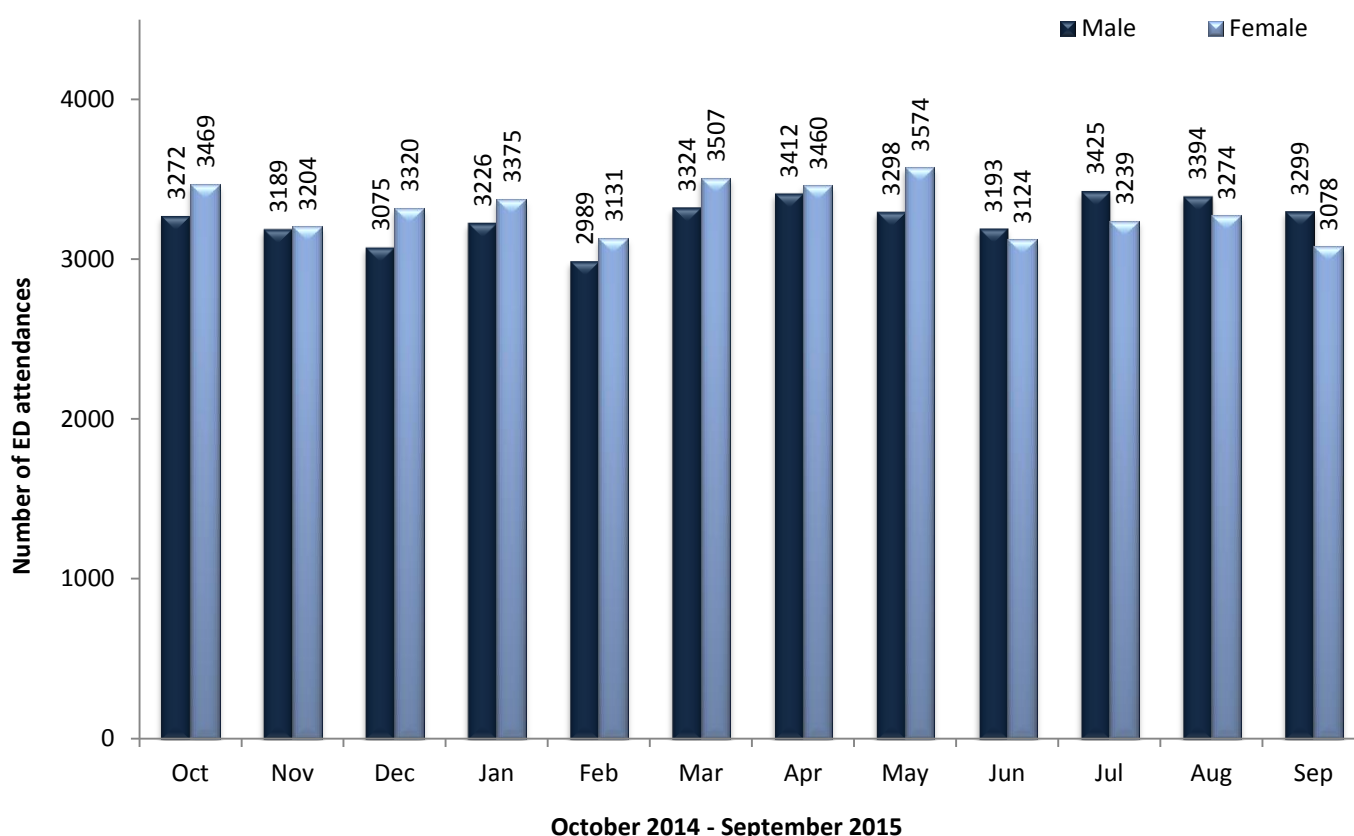
tiig.info

twitter.com/tiig_cph

ALL INJURY ATTENDANCES

This bulletin provides a breakdown of all injury attendances¹ to University Hospital Aintree Emergency Department (ED) between October 2014 and September 2015. From October 2014 to September 2015, there were 78,865 attendances to University Hospital Aintree ED. Calculated as a daily average, April had the highest number of attendances, (229 per day) and December had the lowest (206 per day). There were similar proportions of female and male attendances to Aintree ED (50% each; figure 1).

Figure 1: Gender of ED attendances by month, October 2014 to September 2015*

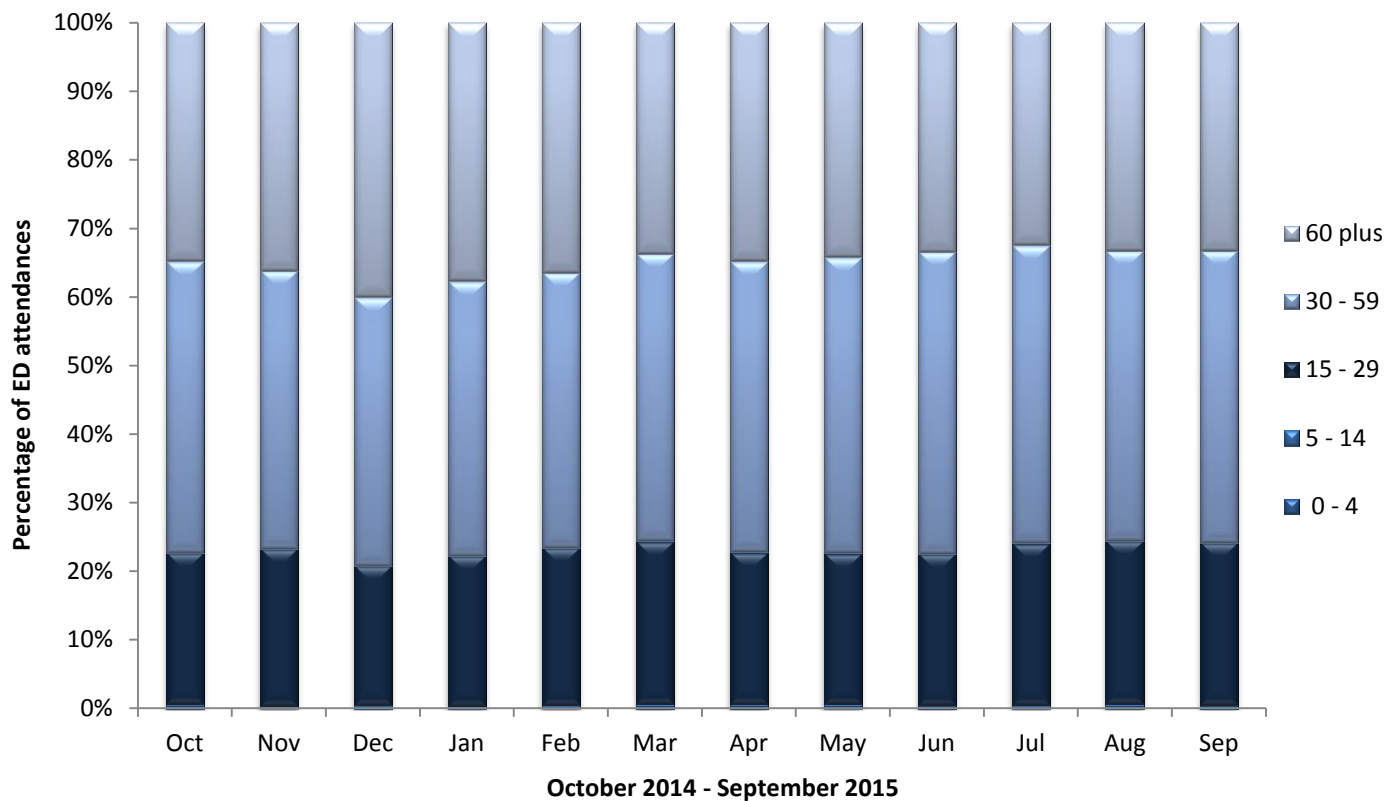


*There were 14 attendances where gender was recorded as unknown; these records have been omitted from the chart.

Figure 2 displays age group of ED attendances for each month. Over two-fifths (42%) were aged 30-59 years (n=33,003) and almost all (99%) ED attendances were aged 15 years or over, which is likely due to the close proximity of Alder Hey children's Hospital ED.

¹This report includes all attendances to University Hospital Aintree Emergency Department.

Figure 2: Age group of ED attendances by month, October 2014 to September 2015[^]



[^]There were thirty nine attendances where age was not recorded.

Of recorded injury groups, falls accounted for 11% of all attendances, followed by road traffic collisions (3%), DSH, assaults, and sports injuries, all with 2% each (table 1).

Table 1: ED attendances by injury group and month, October 2014 to September 2015²

Injury group	Oct	Nov	Dec	Jan	Feb	Mar	Apr	May	Jun	Jul	Aug	Sep	Total	%
Other/unknown	5620	5336	5302	5492	4902	5539	5478	5554	5079	5347	5304	5006	63958	81
Fall	631	539	678	614	654	728	775	733	685	716	763	770	8286	11
Road traffic accident	178	157	148	179	176	150	185	178	156	228	173	178	2086	3
Deliberate self-harm	86	94	95	107	151	147	160	172	143	166	180	153	1654	2
Assault	109	128	111	122	123	137	128	115	138	111	122	132	1476	2
Sports injury	103	124	50	<85	106	126	<150	<120	111	<95	114	131	1302	2
Firework	15	16	13	***	8	7	***	***	6	***	14	7	101	0
Total	6742	6394	6397	6602	6120	6834	6874	6872	6318	6664	6670	6378	78865	100

Table 2 shows the incident location of injury attendances. Almost three quarters (73%) of incidents took place in the home, 11% occurred in both a public space and also in 'other' locations, and 5% occurred at work.

² Please note that all numbers less than five have been suppressed (***) in line with patient confidentiality and if there is only one number less than five in a category then two numbers will be suppressed at the next level in order to prevent back calculations from totals.

Table 2: ED attendances by location of incident and month, October 2014 to September 2015²

Incident location	Oct	Nov	Dec	Jan	Feb	Mar	Apr	May	Jun	Jul	Aug	Sep	Total	%
Home	5025	4756	4870	4977	4411	4953	4952	4925	4467	4694	4726	4523	57279	73
Public space	676	595	577	605	693	739	828	827	842	907	920	845	9054	11
Other	720	745	707	741	683	785	756	768	642	704	695	691	8637	11
Work	305	283	<230	266	315	325	327	328	354	349	<330	304	3713	5
School	16	15	<15	13	18	32	11	24	13	10	***	15	182	0
Total	6742	6394	6397	6602	6120	6834	6874	6872	6318	6664	6670	6378	78865	100

Table 3 shows the arrival method for injury attendances to University Hospital Aintree ED. Over two-fifths (43%) arrived by private transport and nearly four in ten (39%) arrived by ambulance.

Table 3: ED attendances by arrival mode of incident and month, October 2014 to September 2015

Arrival mode	Oct	Nov	Dec	Jan	Feb	Mar	Apr	May	Jun	Jul	Aug	Sep	Total	%
Private transport	2919	2717	2692	2680	2584	3030	3039	3099	2755	2955	2949	2735	34154	43
Ambulance	2609	2545	2651	2780	2385	2536	2581	2555	2398	2490	2491	2425	30446	39
Taxi	698	668	642	674	706	727	760	741	676	716	718	700	8426	11
Public transport	222	196	157	184	169	236	238	201	188	207	219	227	2444	3
Walk	185	159	143	162	160	201	160	153	184	185	183	186	2061	3
Police	56	50	59	65	60	53	54	49	65	55	62	57	685	1
Other/unknown	53	59	53	57	56	51	42	74	52	56	48	48	649	1
Total	6742	6394	6397	6602	6120	6834	6874	6872	6318	6664	6670	6378	78865	100

The disposal of a patient can give an indication of the severity of injuries sustained. Over four in ten (41%) of ED attendees were admitted to hospital, as well as 41% being discharged from hospital without a follow-up (table 4).

Table 4: Discharge method of ED attendances by month, October 2014 to September 2015³

Discharge method	Oct	Nov	Dec	Jan	Feb	Mar	Apr	May	Jun	Jul	Aug	Sep	Total	%
Admitted to hospital	3000	2904	2997	2919	2728	3117	2913	2989	2226	2161	2119	2105	32178	41
Discharged	2511	2362	2288	2482	2255	2484	2639	2674	2909	3235	3140	3000	31979	41
Discharged - GP	440	420	379	379	372	341	417	301	301	316	411	304	4381	6
Referred to fracture clinic	272	218	238	249	220	285	311	292	295	291	329	308	3308	4
Referred to other outpatient clinic	190	187	142	150	163	182	180	199	182	233	205	233	2246	3
Left department	90	93	121	146	125	156	171	165	164	182	187	182	1782	2
Other HCP	100	77	89	106	80	81	87	105	80	93	113	84	1095	1
Other	62	50	64	77	108	88	69	75	68	55	72	76	864	1
Referred to ED Clinic	60	64	62	70	52	90	72	59	80	73	80	75	837	1
Died in Department	17	19	17	24	17	10	15	13	13	25	14	11	195	0
Total	6742	6394	6397	6602	6120	6834	6874	6872	6318	6664	6670	6378	78865	100

³ HCP = Health Care Professional; GP = General Practitioner.

ASSAULT ATTENDANCES

Between October 2014 and September 2015 there were 1,476 assault attendances to University Hospital Aintree ED. Seven in ten (70%) of assault attendees between October 2014 and September 2015 were male. Just under half of all assault attendees (49%) were aged between 15 and 29 years and 47% were aged between 30 and 59 years.